

---

## *Floating Leaves Beanie*

---



Gauge: 22 sts /20 rows = 10x10cm (in the round) (ish, if you are not too far off it should be OK)

4mm/ US 6 circular needle, or the size that will give you the right gauge.

About half a ball of yarn. Sample knitted in double yarn using Drops Kid Silk / Drops Baby Merino.

---

## *Instructions*

*Before starting, I strongly recommend you check all symbols of the stitches used (see below) and make sure you understand them. They are plenty of videos available on You Tube but I personally prefer the glossary on [www.knittinghelp.com](http://www.knittinghelp.com).*

**Cast on 80 stitches.**

**Join the round** without twisting, place a marker to indicate beginning of row and **work in seed stitch to form the beanie edge:**

R1: \*K1, P1\*, repeat until end of round

R2: \*P1, K1\*, repeat until end of round

and alternate for a total of 10 rows (or 22 rows if you would like to fold the edge).

**We will now start the lace pattern.** Place a marker every 16 stitches, to indicate where each lace motif starts and finishes. There are 5 motifs, hence 5 markers including the start-of-round marker. It is a good idea to highlight this start-of-round marker to avoid confusion when changing line on the chart – I personally put two markers here. You can either follow the diagram or written lace charts.

**Follow LACE CHART 1 once**, repeating each row 5 times before moving on to the next row. You are working in the round so the lace chart always reads left to right.

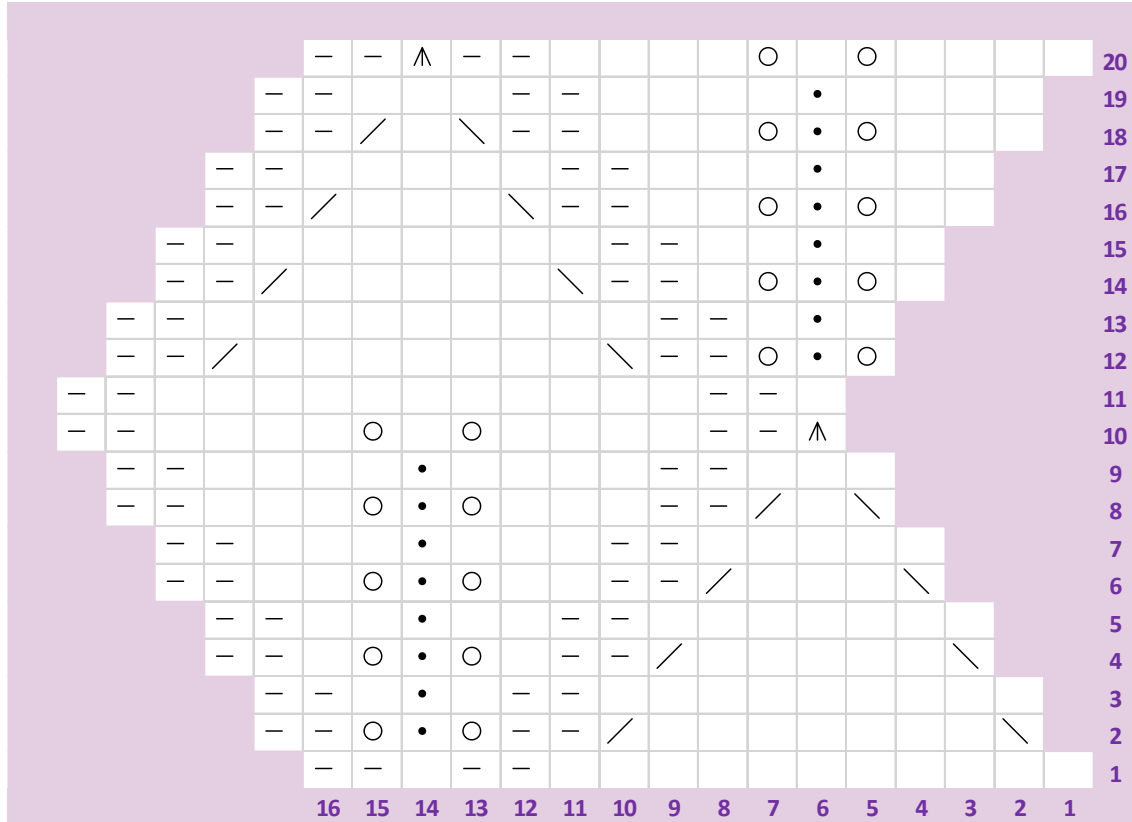
Then **follow LACE CHART 2 once**, repeating each row 5 times before moving on to the next row.

From row 32 you are progressively reducing the number of stitches to create the beanie crown. You should end up with 15 stitches on row 41.

To **finish off the beanie**, break off yarn while leaving reasonable length (about 30cm). Pass on all stitches to one needle, then using a tapestry needle pass the leftover yarn through the stitches and secure in place on the inside. Either cut the remaining yarn or use it to attach a pom-pom.

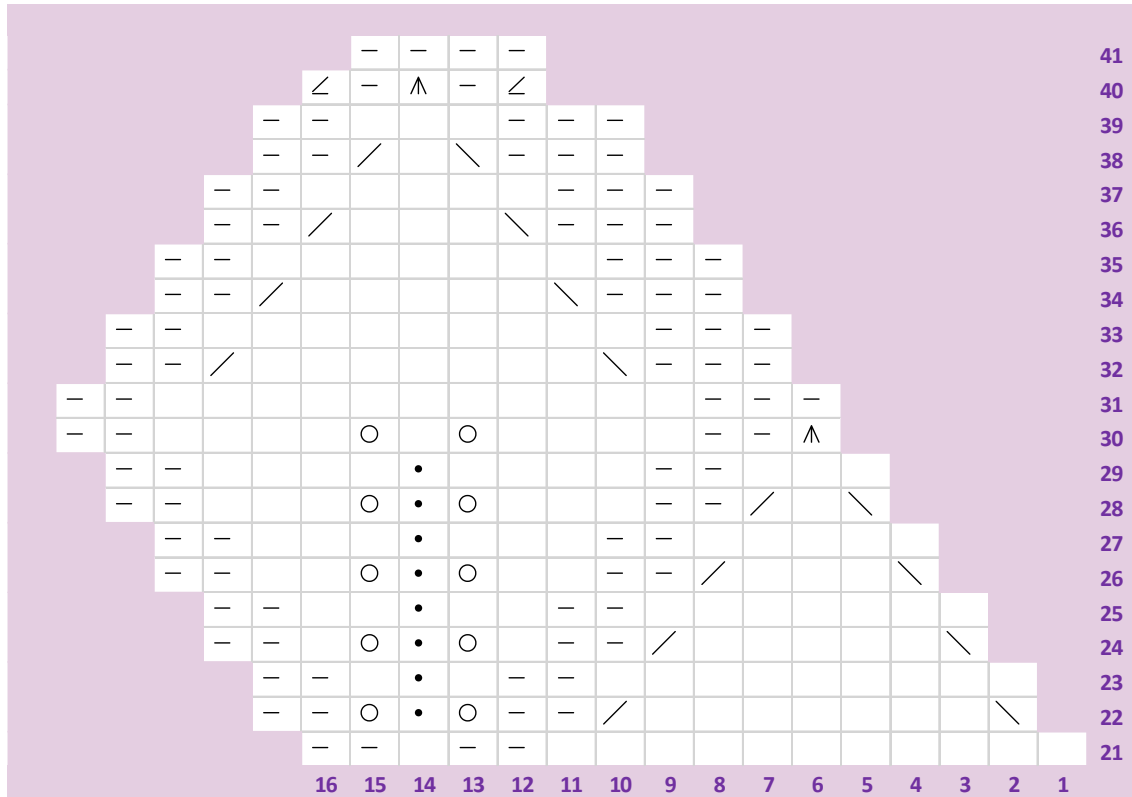
Lace charts diagrams

LACE CHART 1



	K	Knit
	Purl	Purl
	Yo	Pass yarn over (without knitting)
	Ktbl	Knit stitch through the back loop
	K2tog	Knit 2 together
	SSK	Slip, slip, knit the two slipped stitches together
	Sl1 K2tog pssso	Slip 1, knit 2 together, pass slipped stitch over
	P2tog	Purl 2 together


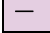
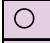





LACE CHART 2



	K	Knit
	Purl	Purl
	Yo	Pass yarn over (without knitting)
	Ktbl	Knit stitch through the back loop
	K2tog	Knit 2 together
	SSK	Slip, slip, knit the two slipped stitches together
	Sl1 K2tog pssso	Slip 1, knit 2 together, pass slipped stitch over
	P2tog	Purl 2 together

---

*Lace charts written*

	K	Knit
	Purl	Purl
	Yo	Pass yarn over (without knitting)
	Ktbl	Knit stitch through the back loop
	K2tog	Knit 2 together
	SSK	Slip, slip, knit the two slipped stitches together
	Sl1 K2tog pssso	Slip 1, knit 2 together, pass slipped stitch over
	P2tog	Purl 2 together

**LACE CHART 1**

R1: K11, P2, K1, P2

R2: SSK, K7, K2tog, P2, Yo, Ktbl, Yo, P2

R3: K9, P2, K1, Ktbl, K1, P2

R4: SSK, K5, K2tog, P2, K1, Yo, Ktbl, Yo, K1, P2

R5: K7, P2, K2, Ktbl, K2, P2

R6: SSK, K3, K2tog, P2, K2, Yo, Ktbl, Yo, K2, P2

R7: K5, P2, K3, Ktbl, K3, P2

R8: SSK, K1, K2tog, P2, K3, Yo, Ktbl, Yo, K3, P2

R9: K3, P2, K4, Ktbl, K4, P2

R10: Sl1 K2tog pssso, P2, K4, Yo, K1, Yo, K4, P2

R11: K1, P2, K11, P2

R12: Yo, Ktbl, Yo, P2, SSK, K7, K2tog, P2

R13: K1, Ktbl, K1, P2, K9, P2

R14: K1, Yo, Ktbl, Yo, K1, P2, SSK, K5, K2tog, P2

R15: K2, Ktbl, K2, P2, K7, P2


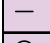
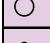
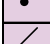


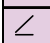

R16: K2, Yo, Ktbl, Yo, K2, P2, SSK, K3, K2tog, P2

R17: K3, Ktbl, K3, P2, K5, P2

R18: K3, Yo, Ktbl, Yo, K3, P2, SSK, K1, K2tog, P2

R19: K4, Ktbl, K4, P2, K3, P2

R20: K4, Yo, Ktbl, Yo, K4, P2, Sl1 K2tog pssso, P2

	K	Knit
	Purl	Purl
	Yo	Pass yarn over (without knitting)
	Ktbl	Knit stitch through the back loop
	K2tog	Knit 2 together
	SSK	Slip, slip, knit the two slipped stitches together
	Sl1 K2tog pssso	Slip 1, knit 2 together, pass slipped stitch over
	P2tog	Purl 2 together

**LACE CHART 2**

- R21: K11, P2, K1, P2
- R22: SSK, K7, K2tog, P2, Yo, Ktbl, Yo, P2
- R23: K9, P2, K1, Ktbl, K1, P2
- R24: SSK, K5, K2tog, P2, K1, Yo, Ktbl, Yo, K1, P2
- R25: K7, P2, K2, Ktbl, K2, P2
- R26: SSK, K3, K2tog, P2, K2, Yo, Ktbl, Yo, K2, P2
- R27: K5, P2, K3, Ktbl, K3, P2
- R28: SSK, K1, K2tog, P2, K3, Yo, Ktbl, Yo, K3, P2
- R29: K3, P2, K4, Ktbl, K4, P2
- R30: Sl1 K2tog pssso, P2, K4, Yo, K1, Yo, K4, P2
- R31: P3, K11, P2
- R32: P3, SSK, K7, K2tog, P2
- R33: P3, K9, P2
- R34: P3, SSK, K5, K2tog, P2
- R35: P3, K7, P2
- R36: P3, SSK, K3, K2tog, P2
- R37: P3, K5, P2
- R38: P3, SSK, K1, K2tog, P2
- R39: P3, K3, P1
- R40: P2 tog, Sl1 K2tog pssso, P2 tog
- R41: P5